




COOPLET® Weld Outlets & Adapter Nipples

Weld Outlet Specifications

-  Branded COOPLET® Weld Outlets are UL Listed and FM Approved at 300 psi
- COOPLET® Weld Outlets (Threaded) conform to ASTM A-106, ASME B1.20.1
- COOPLET® Grooved Weld Outlets are made from Sch 40 Pipe, ASTM A-53 Grade A
- COOPLET® Grooved Weld Outlets size-on-size are UL Listed Only
- All Grooves are cut grooved per AWWA C606
- ProPak™ Packaging



COOPLET® Weld Outlets are UL Listed and FM Approved for use on Sch 10, Sch 40 and the following sprinkler pipe

Pipe Name	Manufacturers
Dyna- Thread®, Central- Thread®, XL®, XL-II®, Dyna-Flow®, Super 40®, Super- Flo®, TL®, Central 7®, BLT®	Allied Tube and Conduit Corp.
Eddylite®, Eddy Flow®, Eddy Thread 40®	Bull Moose Tube Co.
Gal-7®	IDOD Systems Co.
EZ-Flow®	Northwest Pipe Company
WLS®, Mega Flow®, Mega- Thread®, MLT®, GL®	Wheatland Tube Company
Steady Flow®, Steady Thread®	Welded Tube Corp.
Fire-Flo®, Ez- Thread®	Youngstown Tube Co.
Tex- Flow®	Tex- Tube International
Fire Line Flow®, Rapid Thread®, Rapid-Thread Light®	Western International Forest Products Inc.

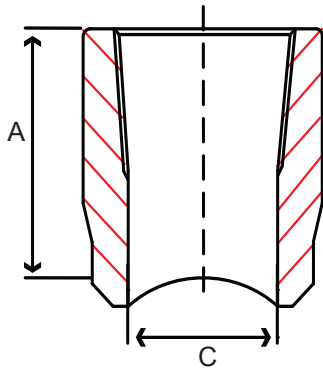
Adapter Nipple Specifications

- Sch 40 COOPLET® Adapter Nipples conform to ASTM A-53, Grade A, ASME B1.20.1, ASME B36.10, and AWWA C-606
- Sch 80 COOPLET® Adapter Nipples conform to ASTM A-106, ASME B1.20.1, ASME B36.10, and AWWA C-606
- All grooves are cut grooved per AWWA 606

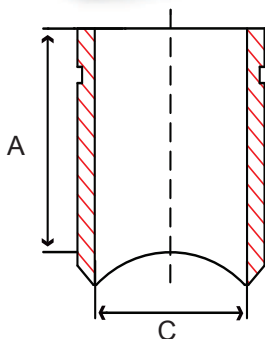


SCI ProPak™ System

Fig. 61FT1 – Threaded Weld Outlet



Size in	Pipe Run Size	Part Number	A in	C in	Packing		Weight lb
					Inner	Master	
1/2	1 to 1-1/2	61FT1004010	1.063	0.750	50	400	0.1
1/2	2 to 2-1/2	61FT1004020	1.063	0.750	50	400	0.1
1/2	3 to 8	61FT1004030	1.063	0.750	50	400	0.1
3/4	1 to 1-1/2	61FT1006010	1.125	0.875	50	300	0.2
3/4	2 to 2-1/2	61FT1006020	1.125	0.875	50	300	0.2
3/4	2-1/2	61FT1006024	1.125	0.875	50	300	0.2
3/4	3 to 8	61FT1006030	1.125	0.875	50	300	0.2
1	1-1/4	61FT1010012	1.250	1.125	50	200	0.2
1	1-1/2	61FT1010014	1.250	1.125	50	200	0.2
1	2 to 2-1/2	61FT1010020	1.250	1.125	50	200	0.2
1	2-1/2	61FT1010024	1.250	1.125	50	200	0.2
1	3 to 4	61FT1010030	1.250	1.125	50	200	0.2
1	5 to 8	61FT1010060	1.250	1.125	50	200	0.2
1-1/4	1-1/2	61FT1012014	1.375	1.500	70	140	0.3
1-1/4	2	61FT1012020	1.375	1.500	70	140	0.3
1-1/4	2-1/2	61FT1012024	1.375	1.500	70	140	0.3
1-1/4	3 to 4	61FT1012030	1.375	1.500	70	140	0.3
1-1/4	5 to 8	61FT1012060	1.375	1.500	70	140	0.3
1-1/2	2	61FT1014020	1.625	1.625	50	100	0.5
1-1/2	2-1/2	61FT1014024	1.625	1.625	50	100	0.5
1-1/2	3	61FT1014030	1.625	1.625	50	100	0.5
1-1/2	4 to 5	61FT1014040	1.625	1.625	50	100	0.5
1-1/2	6 to 8	61FT1014060	1.625	1.625	50	100	0.5
2	2-1/2	61FT1020024	1.750	2.000	25	50	0.8
2	3	61FT1020030	1.750	2.000	25	50	0.8
2	4 to 5	61FT1020040	1.750	2.000	25	50	0.8
2	6 to 8	61FT1020060	1.750	2.000	25	50	0.8
2-1/2	3	61FT1024030	2.215	2.500	15	30	1.4
2-1/2	4	61FT1024040	2.215	2.500	15	30	1.4
2-1/2	6	61FT1024060	2.215	2.500	15	30	1.4
2-1/2	8	61FT1024080	2.215	2.500	15	30	1.4
3	4	61FT1030040	2.500	3.000	8	16	2.4
3	6	61FT1030060	2.500	3.000	8	16	2.3
3	8	61FT1030080	2.500	3.000	8	16	2.3
4	6	61FT1040060	3.000	4.000	4	8	4.1
4	8	61FT1040080	3.000	4.000	4	8	4.0



All Grooves are Cut Grooved

Fig. 61CG1 – Grooved Weld Outlet (size on size)*

Size in	Pipe Run Size	Part Number	A in	C in	Packing		Weight lb
					Inner	Master	
1-1/4	1-1/4	61CG1012012	3.00	1.38	40	80	0.5
1-1/2	1-1/2	61CG1014014	3.00	1.61	25	50	0.6
2	2	61CG1020020	3.00	2.00	16	32	0.8
2-1/2	2-1/2	61CG1024024	3.00	2.50	12	24	1.3
3	3	61CG1030030	3.00	3.00	6	12	1.8
4	4	61CG1040040	4.00	4.00	4	8	3.5
6	6	61CG1060060	4.00	6.00	-	2	6.5
8	8	61CG1080080	4.00	8.00	-	2	11.6

*Size on Size Grooved Weld Outlets are UL Listed Only